

Sverre Planke

VBPR
Tel +47 22958924
Fax +47 22604427
planke@vbpr.no

Erling Frantzen

TGS (Norway)
Tel +47 66 76 99 60
Fax +47 66 76 99
erling.frantzen@tgsnopec.no

Reidun Myklebust

TGS (Norway)
Tel +47 66 76 99 39
Fax +47 66 76 99 10
reidun.myklebust@tgsnopec.no

www.tgsnopec.com

www.vbpr.no



BARENTS SEA

GEOPHYSICAL ATLAS



INTEGRATED SEISMIC, GRAVITY AND
MAGNETIC INTERPRETATION

GEOPHYSICAL ATLAS OF THE BARENTS SEA

TGS-NOPEC and Volcanic Basin Petroleum Research (VBPR) present the *Geophysical Atlas of the Barents Sea*, an integrated seismic, gravity and magnetic interpretation study for the western and eastern Barents Sea. The *Geophysical Atlas of the Barents Sea* presents high-quality potential field maps and integrated regional basin configuration and geologic development based on the integrated seismic-gravity-magnetic (SGM) interpretation method. The main audience is seismic interpreters and regional geologists.

TABLE OF CONTENTS

Part I Introduction

- Chapter 1 Executive summary
- Chapter 2 Geological framework
- Chapter 3 Petroleum systems
- Chapter 4 Data and methods

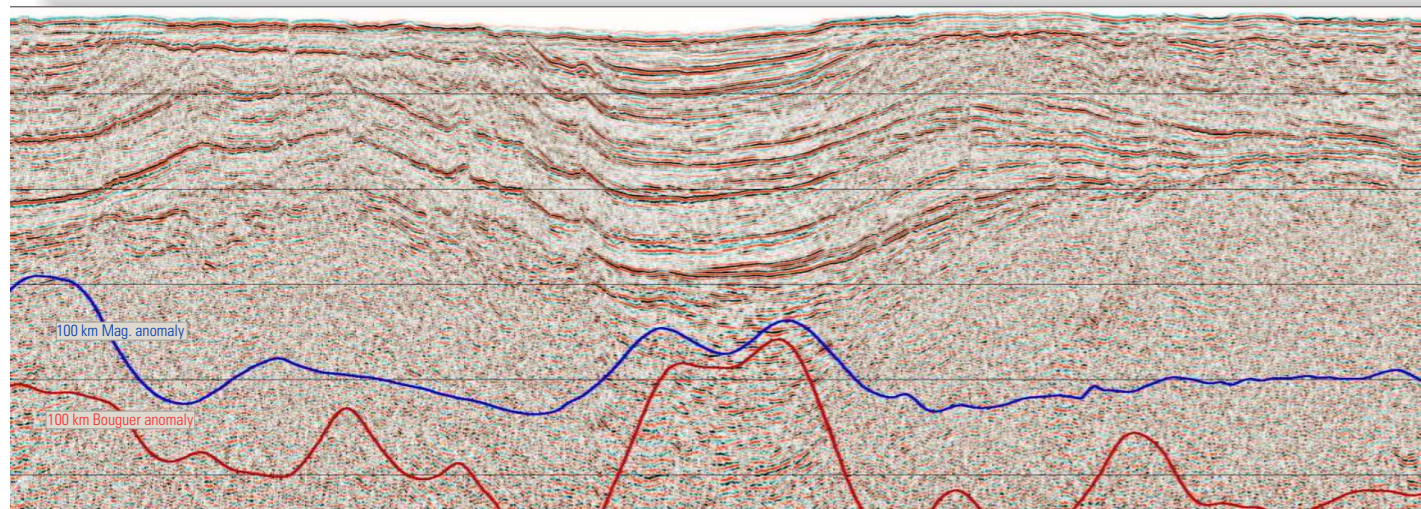
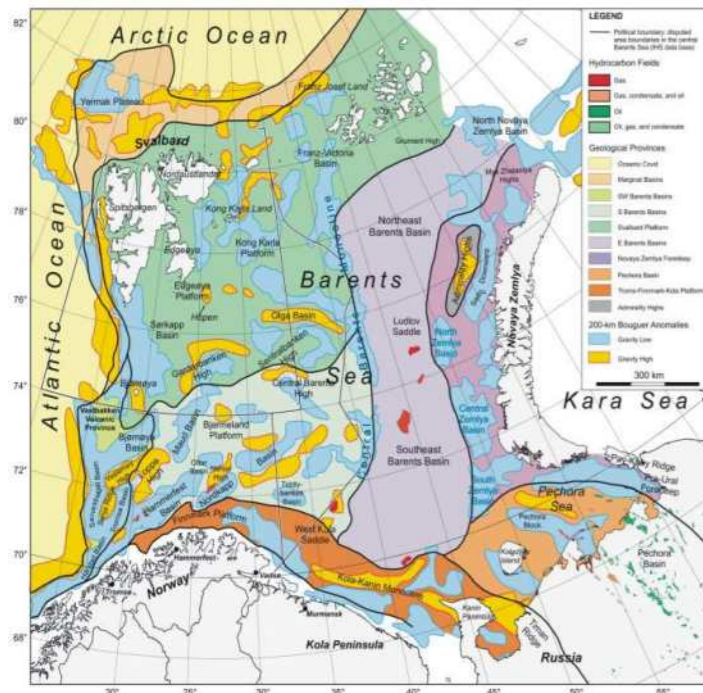
Part II Western Barents Sea Case Studies (Norwegian Sector)

- Chapter 5 Regional maps
- Chapter 6 SW Barents Sea: deep Cretaceous basins and continental margin
- Chapter 7 SW Barents Sea: Upper Paleozoic evaporites
- Chapter 8 NW Barents Sea and Svalbard
- Chapter 9 Sentralbanken High and Olga Basin

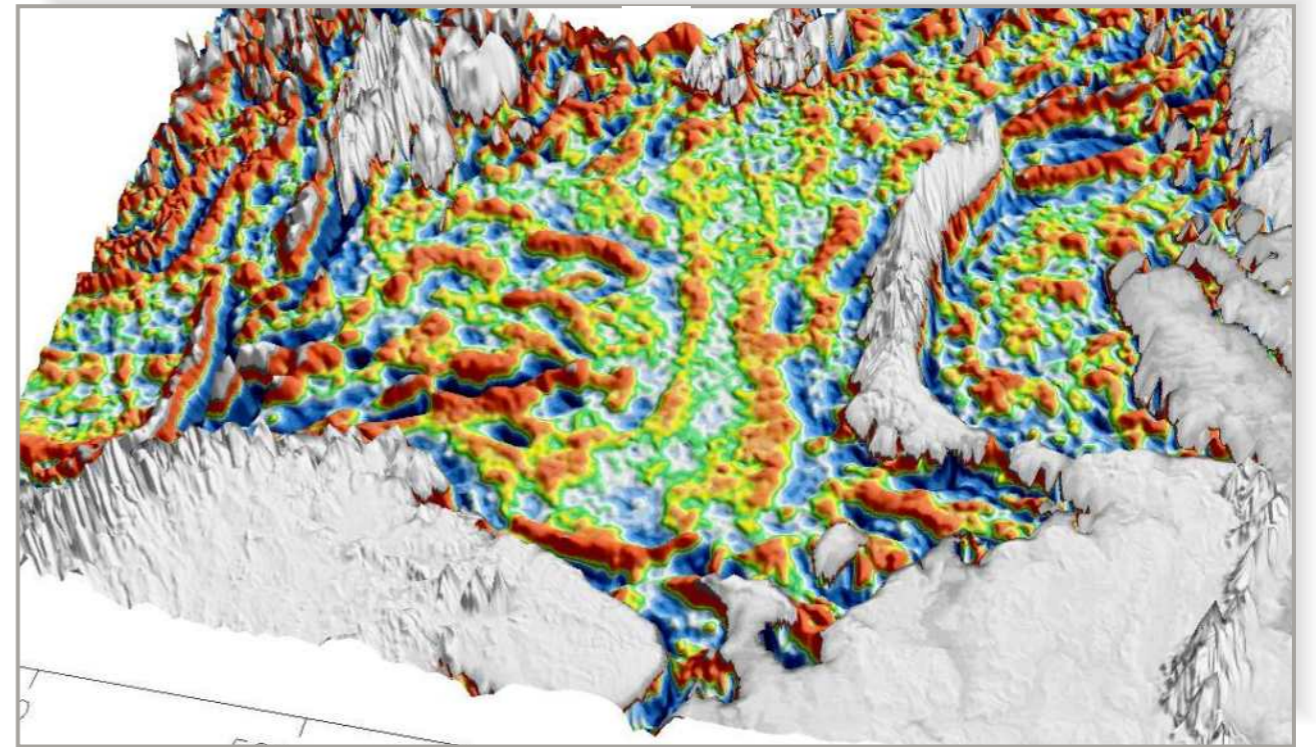
Part III Eastern Barents Sea Case Studies (Russian Sector)

- Chapter 10 Regional maps
- Chapter 11 Pechora Sea: Platform ridges and basins
- Chapter 12 South Barents Basin: Inverted basins, domes and volcanism
- Chapter 13 North Barents Basin: Inverted basins, domes and volcanism

Appendix



Inverted basins in the Barents Sea



Structural domains of the Barents Sea

Integrated SGM method

- data specific processing, inversion and interpretation
- qualitative integrated interpretation in seismic workstation environment
- case-studies and quantitative modeling of key basin segments and potential field anomalies

Data-specific

- ship-track and satellite gravity
- regional aeromagnetic data
- regional grid of deep seismic data
- wide-angle seismic refraction data

Products

- Paper A3 report and digital pdf version on CD-ROM
- In-house presentation can be offered

Price

- NOK 550,000