

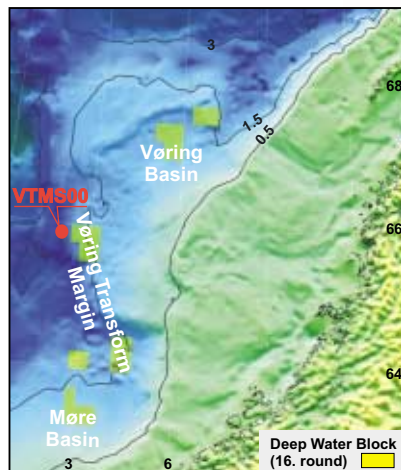
Vøring Transform Margin Sampling Project

The Vøring Transform Margin and outer Møre and Vøring basins are frontier exploration areas. Little geological information is currently available from this region.

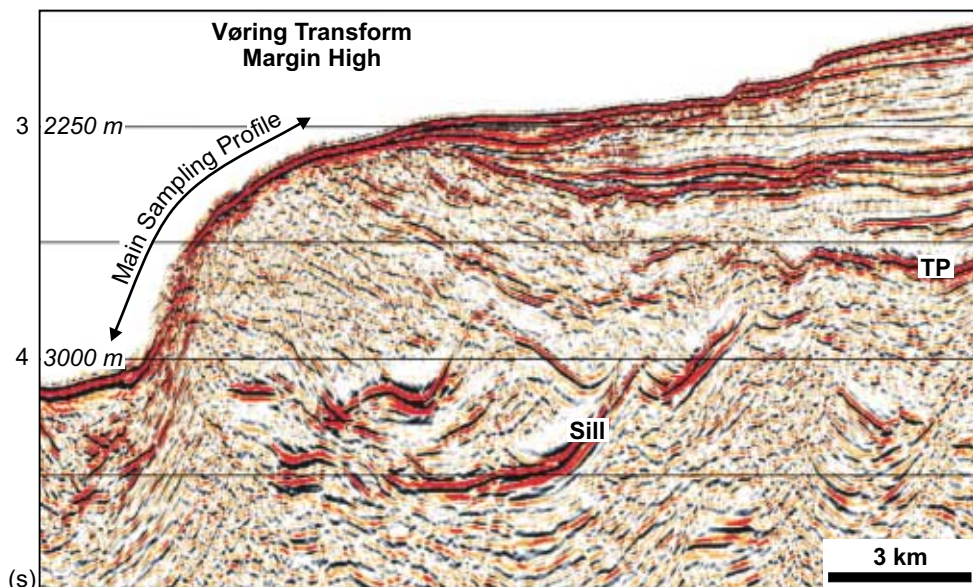
VBPR and TGS-NOPEC have recently completed a multi-client sea floor sampling project on the Vøring Transform Margin, the VTMS00 survey.

The first *in situ* samples of pre-breakup-age sedimentary rocks from this basin province were recovered during the cruise. The recovered samples have been extensively studied and analysed.

The samples have been tied to reprocessed seismic data and provide important information about the paleoenvironment, basin development and petroleum systems of the outer Vøring and Møre basins.



VTMS00. Location map.



Mimir structure. Fourteen cores and two dredges were collected along the main sampling profile.

Highlights

- Tertiary and Mesozoic sedimentary rocks recovered in 11 cores and 2 dredges.
- Heat flow measured at 14 stations.

Analysis Program

- Sedimentology.
- Biostratigraphy.
- Inorganic geochemistry and petrology.
- Organic geochemistry.
- Seismic processing.



Rock on deck. Satisfied geologists and crew after recovering samples from 3000 m depth.



Selcore sample. Split liner showing the contact between the overburden clay and fragmented claystone.

Table of Contents

Executive Summary	5
Introduction	11
Operations	17
Explanatory Notes	23
Results	45
Discussion and Conclusions	65
References	73
Appendix 1:	
Core Descriptions	77
Appendix 2:	
Biostratigraphic Range Charts	129

Authors: Sverre Planke and Ellen Eckhoff (VBPR) and Reidun Myklebust (TGS-NOPEC).

Contributors: Haavard Selnes (Stratlab), Henrik Svensen (VBPR), Øyvind Mjøen (TGS-NOPEC), Niegel Mills (APT) and Alf Kr. Nilsen (UiO).

Report and data available in paper (A4) and digital form.