

# Barents Sea | BS12

## Geophysical Atlas of the Barents Sea 22nd Licensing Round Edition

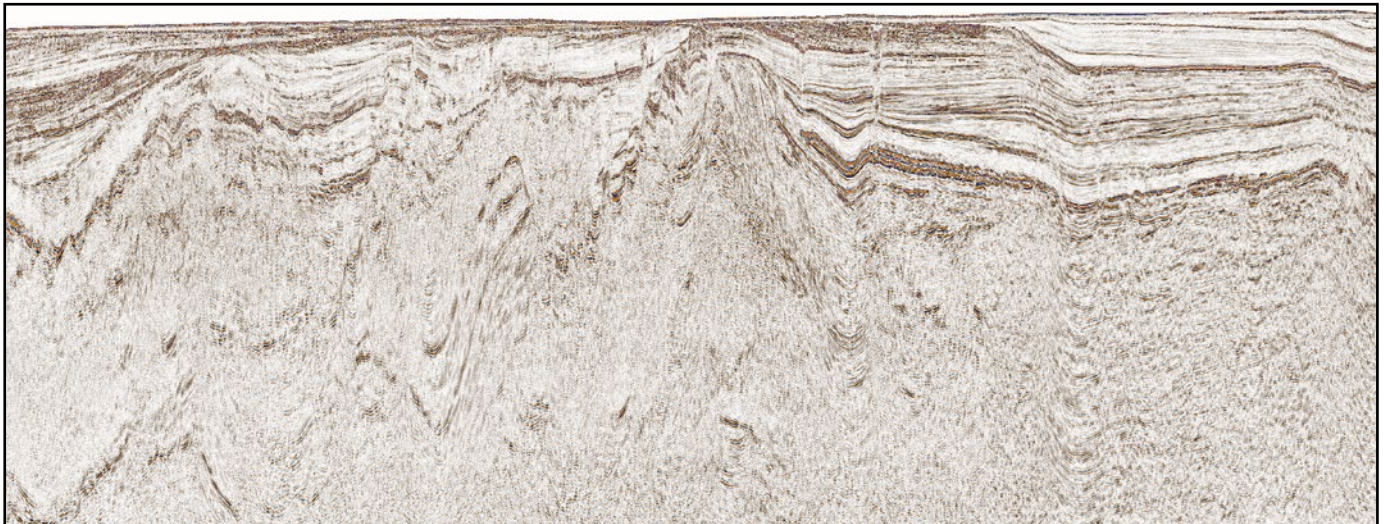
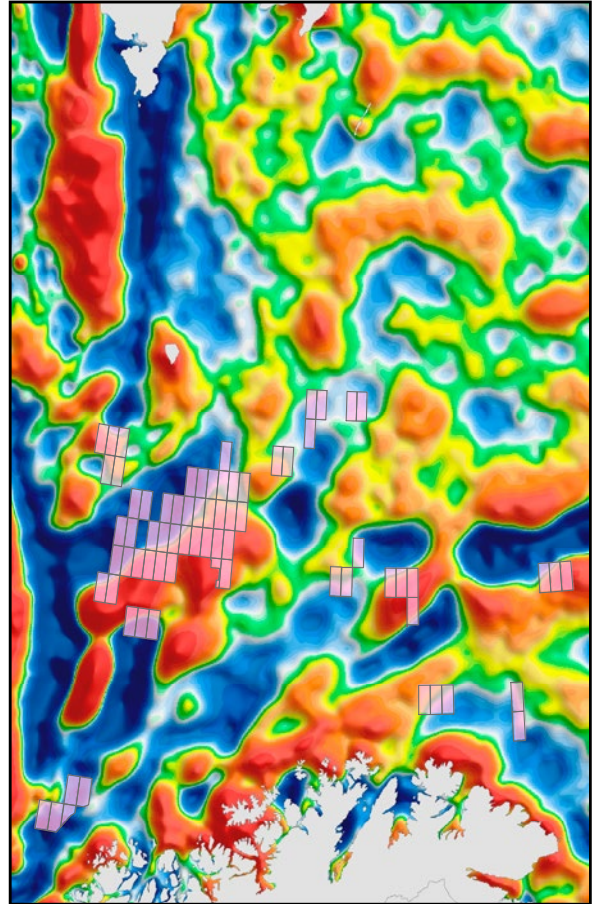
TGS and VBPR are pleased to announce the 22<sup>nd</sup> Licensing Round Edition of the Geophysical Atlas of the Barents Sea - an integrated seismic, gravity and magnetic (SGM) interpretation study. The Atlas focuses on the announced blocks in the southwest Barents Sea margin, platform areas, and the formerly disputed zone.

Recent exploration success on the SW margin has generated renewed interest in the Barents Sea, but large areas of the region remain poorly explored.

Integrated SGM interpretation, gravity/magnetic modeling, petroleum system assessment across interpreted crustal transects, and synthesis with the conjugate East Greenland margin improve the geological understanding of the region and greatly reduce exploration risks.

### Highlights

- Basin structure from integrated seismic, gravity, and magnetic interpretation
- Gravity and magnetic anomaly modeling
- Basin modeling and petroleum potential assessment
- Plate tectonic reconstruction and conjugate margin synthesis



*Seismic example across the Barents Sea margin.*

For more information, contact us:

### TGS

Lensmannsliå 4  
N-1386 Asker, Norway  
Tel: +47 66 76 99 00  
Email: [EURsales@tgsnopec.com](mailto:EURsales@tgsnopec.com)

### VBPR

Forskningsparken  
N-0349 Oslo, Norway  
Tel: +47 22 95 89 24  
Email: [info@vbpr.no](mailto:info@vbpr.no)

